



MIDSTATE CONNECTION

Office Hours: 7:00 am-5:30 pm, Monday-Thursday
Closed Fridays & Holidays

Business Hours: 541-536-2126
After Hours Outages: 800-752-5935

Congratulations Youth Tour Delegates!

We're excited to announce that two youth tour delegates have been selected to represent Midstate Electric at the 2025 Electric Cooperative Youth Tour in Washington D.C., in June.

Lucy Fisher of La Pine High School and Cassidy Nusser of Gilchrist School will embark on this once-in-a-lifetime journey, joining students from across the country for a week of exploration, leadership development, and civic engagement in our nation's capital.

Since the late 1950s, the Youth Tour has provided students with a deeper understanding of American history, the democratic process, and the essential role electric cooperatives play in our communities. Delegates tour historic



Lucy Fisher, La Pine High School

landmarks, visit museums and memorials, and meet with U.S. Senators and Representatives—gaining insight into how government works and why their voices matter.

This unforgettable experience builds leadership, fosters teamwork, and reflects the cooperative



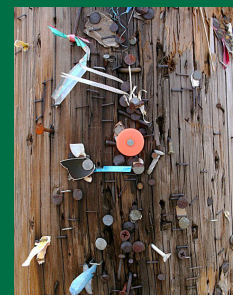
Cassidy Nusser, Gilchrist School

spirit that guides Midstate and co-ops nationwide. Participants also form lasting connections with peers from rural communities across the country.

Congratulations to Lucy and Cassidy—we look forward to seeing how this incredible opportunity shapes your future!

No Posting Zone: Power Poles

Most jobs do not require you to climb 40 feet in the air and conduct business within a few feet of high voltage power lines. However, for many utility workers, this is just another day at the office.



Midstate Electric along with the Safe Electricity program urges everyone to keep utility poles free from all personal materials such as balloons, fliers, and metal objects like staples or tacks. By respecting utility poles, you can help keep your community powered, and your local utility workers safe.

This practice is not only illegal in many areas, but also creates hazards for the linemen who repair and maintain utility poles and other electrical infrastructure and can increase your monthly utility bill.

Utility workers use specialized climbing devices to perform regular maintenance and repair damaged power lines at the top of utility poles. Nails, tacks, and other metal objects that are used to attach objects to utility poles can interfere with the safe operation of the climbing boots used by utility workers.

Foreign objects that are embedded in utility poles can also snag or damage the protective clothing that keeps line workers safe from electrical shock. These men and women already work in extremely hazardous conditions, so everyone who relies on electricity should take steps to make their job as safe as possible.

For more information on staying safe around power lines, utility poles, and electricity, visit SafeElectricity.org.

Showcase Your Talent in MEC's 2026 Calendar Photo Contest

Show off your photography skills for a chance to be featured in our 2026 calendar. Twelve winners will each receive \$50, and one standout photo will land the cover and a \$200 grand prize.

Submit high-resolution digital photos online at www.midstateelectric.coop/calendar-contest, or drop off printed entries at the MEC office.

By entering, you agree to let Midstate publish and use your photo for promotional use. Contest is open to MEC members only.

Submission deadline is August 4, 2025.

CONTEST DETAILS

Members may submit up to five photos. Each photo should include:

- Photographer's name and address.
- A short description of what is shown in the photo. Preference will be given to photos taken within MEC's service areas.
- An email address and telephone number where the photographer can be contacted.
- Digital and printed photo entries must be at least 300 dpi at 10 inches wide by 8 inches tall.
- Horizontal or landscape photos only. Vertical photos and files larger than 20 megabytes will not be accepted.

Let's get connected on social media so you'll never miss an update on MEC activities, programs, and contests.



CLEARING THE WAY:

Electric Cooperatives Trim Trees to Keep You Safe and the Power Flowing

We love trees. They beautify our landscape, provide shade and are an essential part of nature.

When you see us out trimming trees, know that we are doing so to keep you safe and prevent service issues.

Too close for comfort

Although most trees do not present a problem, some of them grow into or crowd power lines or other utility equipment. When greenery becomes too close for comfort, we have to address it because overgrowth can interfere with power distribution and create a fire hazard.

Power lines can give off a spark or arc that may land on a nearby branch and ignite. Additionally, the lights in your house may flicker when tree branches brush power lines during high winds. Stormy weather can also cause limbs to break off and land on lines.

In fact, the majority of power outages are caused by tree-related issues. It is our job to ensure trees, branches and limbs are a safe distance from power lines.

Clear power lines make it easier and safer for lineworkers to access lines and fix problems that may occur. When clearing around lines, we make sure proper pruning techniques are used to preserve tree health as much as possible. Pruning is the first line of defense against unruly trees, although sometimes a tree must be removed. This is a last resort for certain scenarios: when a fast-growing tree is located directly under a power line or for trees that are leaning, in decline, or cracked or split.



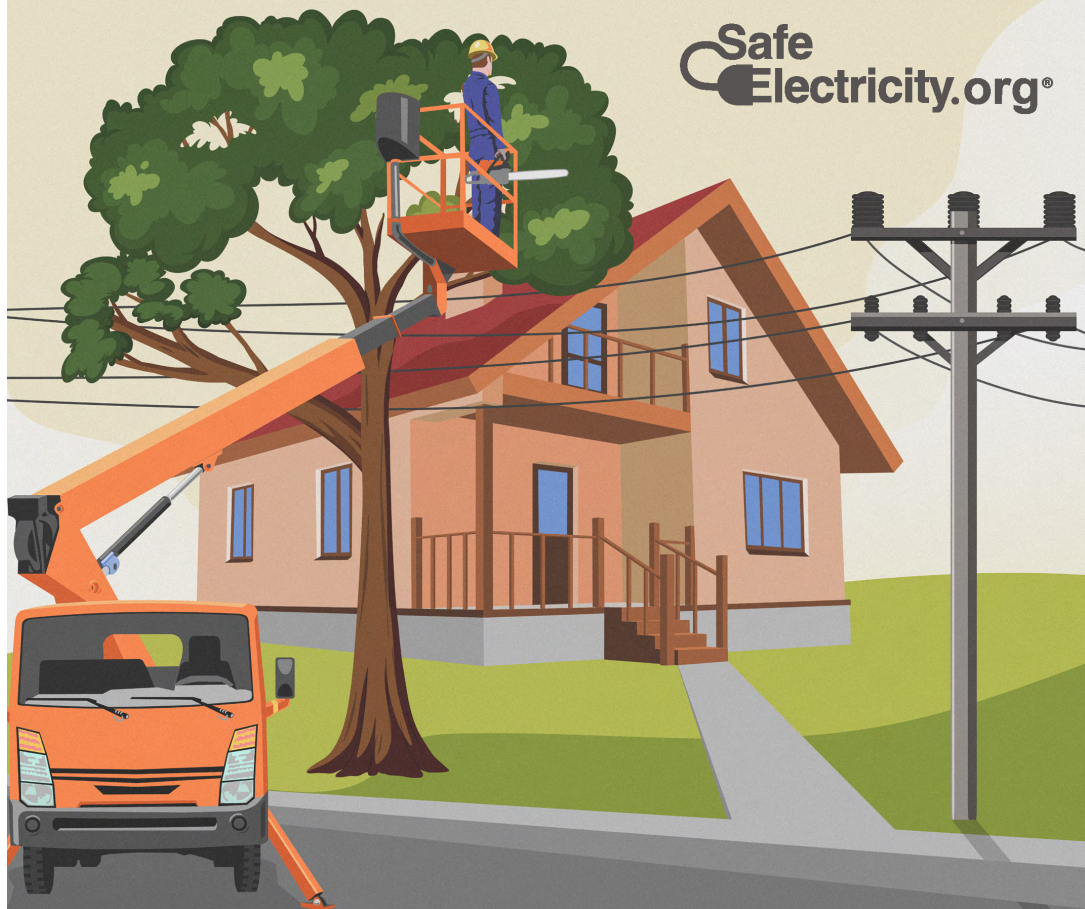
Over the next few months, DJ's Electrical, Inc. will be conducting tree trimming in the Three Rivers/Oregon Water Wonderland areas. This work will focus on trees around our primary power lines and may involve accessing right-of-ways on the properties of approximately 950 members.

If you have any questions, please contact us at 541-536-2126. Thank you for your understanding and cooperation.

TREES — TOO CLOSE FOR (YOUR) COMFORT






TREES CAUSE MAJORITY OF POWER OUTAGES

Safe
Electricity.org®






WHY DOES YOUR POWER PROVIDER TRIM TREES?

Although most trees do not present a problem, some of them grow into or crowd power lines, poles or other utility equipment and cause service issues. Unruly and overgrown trees can:

-  Cause outages.
-  Create fire hazards.
-  Break off and land on power lines.
-  Cause lights to flicker during high winds.
-  Get weighed down with ice and cause issues.

Proper pruning techniques are used to preserve tree health, although sometimes a tree must be removed. This is a last resort, but it can be necessary if there are:

-  Fast-growing trees directly under power lines.
-  Trees that are leaning into lines.
-  Trees that are declining, cracked or split.

Unobstructed power lines make it easier and safer for utility crews to repair or service lines.

✓ Power companies trim trees to better serve you.

Learn more at: SafeElectricity.org